

# Isocheck PRIMO® HL System

overlay platform system direct to floorboards

Manufactured with cross linked Isopoli

Suitable for: E1 - new build • E1 - material change of use

Conversions • Refurbishments - bathrooms & kitchens • New build

CI/SfB  
| (43) | (Y) | (P2) |

March 2010

Rev 2

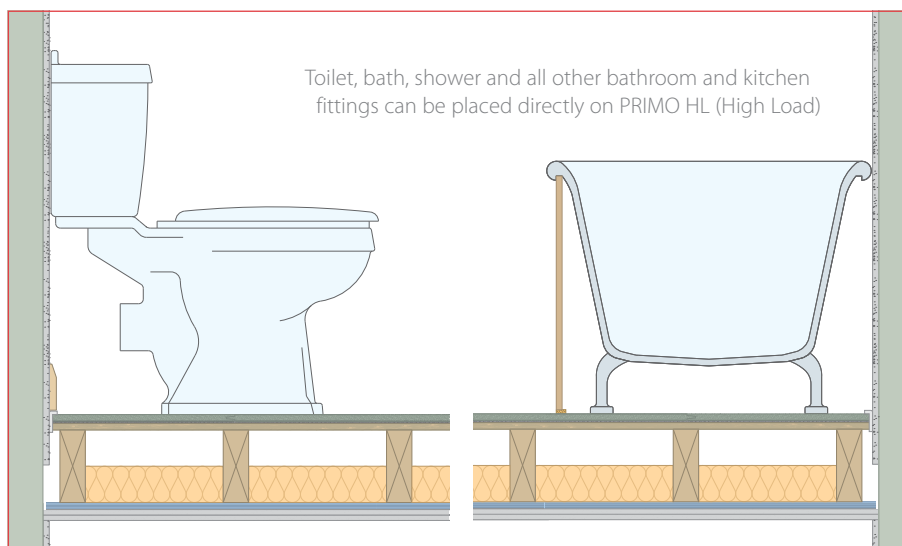
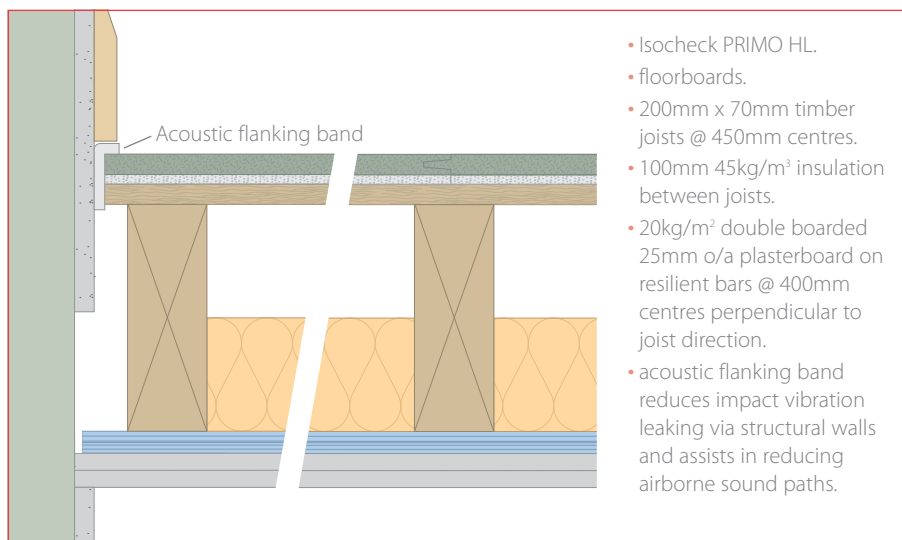
## product data sheet

### Product data

|                            |                       |
|----------------------------|-----------------------|
| Overall size:              | 2400mm x 600mm x 24mm |
| Resilient layer thickness: | 6mm                   |
| Resilient layer:           | Cross linked Isopoli  |
| Weight:                    | 18.8kg per sheet      |

### Performance (on the construction below)

|                    |                     |             |
|--------------------|---------------------|-------------|
| Treated floor with | $D_{nT,w} + C_{tr}$ | $L'_{nT,w}$ |
| Isocheck PRIMO HL  | $\geq 45dB$         | $\leq 62dB$ |



Every effort has been taken in the preparation of this sheet to ensure the accuracy of representations contained herein. Recommendations as to the use of materials, construction details and methods of installation are given in good faith and relate to typical situations. However, every site has different characteristics and reliance should not be placed upon the foregoing recommendations. Advice can be given as to specific applications.

### Description

The isocheck PRIMO HL (High Load) system is designed to reduce sound transmission through traditional joisted timber floors in bathrooms and kitchens.

Isocheck PRIMO HL consists of a 6mm layer of cross linked Isopoli bonded to 18mm P5 V313 moisture resistant chipboard and is ideally suited for the loads and conditions associated with bathroom and kitchens. When installed as part of a complete party floor construction the system enables a traditional timber

joisted floor to meet the sound transmission standards of ADE 2003 (amended 2004).

### Specification

The acoustic floor shall be:

- **PRIMO HL system**, manufactured by Isomass Ltd. St Johns Innovation Centre, Cowley Road, Cambridge, CB4 0WS and installed in accordance with manufacturer's instructions / recommendations.

### Installation

- Apply Isocheck Acoustic Angled Flanking Band on the edges of the Isocheck boards just before they are pushed against the perimeter walls to isolate the board from the wall.
- Lay Isocheck PRIMO HL system over a structural timber sub-floor, in brick bond pattern, applying Isocheck adhesive to all tongued and grooved panel joints.
- Install skirting and trim off excess Flanking Band.
- Full installation instructions are available and must be used in conjunction when laying this floating floor system.

For advice on treatment of services and penetrations, consult our brochure or visit our website:

[www.isomass.co.uk](http://www.isomass.co.uk)

### Technical enquiries

Tel: **0845 838 33 99**

Fax: **0845 838 33 89**

Email: [info@isomass.co.uk](mailto:info@isomass.co.uk)

